

Chiswick Green Studios, London, W4 5BW

Guide Price £599,950

**WHITMAN & CO.**

SALES · LETTINGS · COMMERCIAL

- West facing balcony
- Conceirge/Gym
- Allocated underground parking
- Popular gated development
- Lift access
- No onward chain

Tenure - Leasehold with share of freehold  
 Lease length - 970 Years remaining  
 Ground Rent - Peppercorn  
 Service Charge - £2,314 pa  
 Local authority - Ealing  
 Council Tax - Band E

## THE PROPERTY

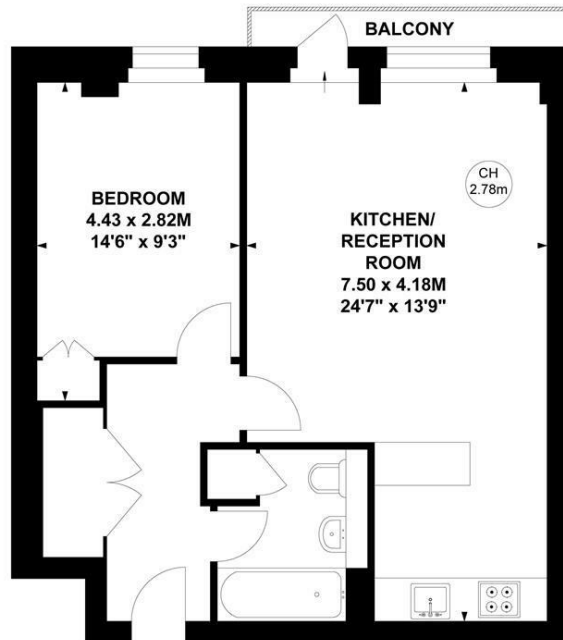
An immaculately presented second-floor apartment in a gated development with a concierge, gym, lift access, underground storage, and secure underground parking. The property features a bright, west-facing open-plan kitchen/reception room with access to the balcony, a spacious double bedroom with fitted wardrobes, a newly refurbished modern bathroom, and ample built-in storage.

Chiswick Green Studios is a short walk from numerous local shops, cafés, and restaurants, both in the immediate vicinity and along Chiswick High Road. Transport links include Chiswick Park and Turnham Green stations, the 94 bus route, and the A4/M4 for easy access in and out of London. No onward chain.

## Chiswick Green Studios, W4

Approximate Gross Internal Area  
 52.94 sq m / 570 sq ft

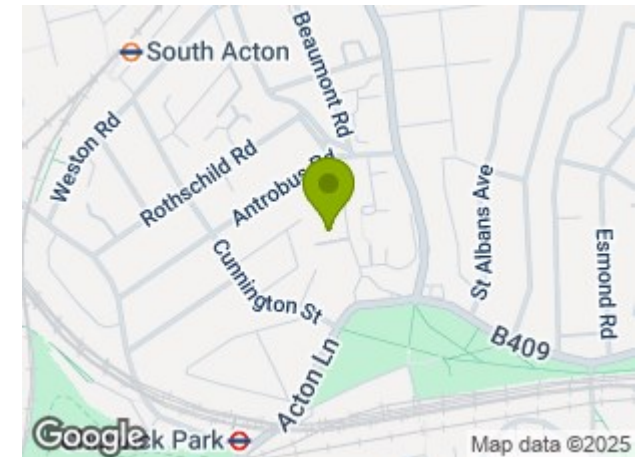
Key :  
 CH - Ceiling Height



### Second Floor

Not to scale, for guidance only and must not be relied upon as a statement of fact.  
 All measurements and areas are approximate only

## SITUATION



5-7 Turnham Green Terrace, Chiswick, London, W4 1RG

Tel 020 8747 8800

E-mail [sales@whitmanandco.com](mailto:sales@whitmanandco.com)

Website [www.whitmanandco.com](http://www.whitmanandco.com)



MISREPRESENTATION ACT 1967

Whitman & Co. for themselves and for the vendors give notice that these particulars do not constitute any part of, an offer of contract. All statements contained in these particulars are made without responsibility on the part of Whitman & Co. or the vendor. None of the statements contained in these particulars is to be relied upon as statements or representations of facts. Any intending purchaser must satisfy himself by inspection or otherwise as to the correctness of each of the statements contained in these particulars. The vendor does not make or give, and neither Whitman & Co. or any person in their employment has any authority to make or give, any representation or warranty whatever in relation to the property.